



GENERAL CHARACTERISTICS

Structure	Aluminum
Classification	USCG Subchapter L/T ABS/DNV optional
Flag	USA

DIMENSIONS

Length O.A.	82.5 ft (25.14 m)
Length Hull	73.8 ft (22.5m)
Beam O.A.	25.9 ft (7.88 m)
Depth	11.9 ft (3.64 m)
Draft (max)	4.8 ft (1.45 m)
Displacement (Lightship)	57 LT (58 tonnes)

CAPACITIES

Fuel oil	2640 USG (10,000 L)
Fresh water	264 USG (1,000 L)
Black water	132 USG (500 L)
Free workdeck area	980 ft ² (91 m ²)
Max deck load	0.15 tons/ft ² (1.5 t/m ²)
Deck cargo	22 tons (20 tonnes)
Crew	< 3 persons
Passengers	< 12 persons

PERFORMANCE

Speed (max)	329.0 knots (550 litres/hr)
Speed (high)	26.5 knots (500 litres/hr)
Speed (low)	23.0 knots (430 litres/hr)

PROPULSION SYSTEM

Main engines	2 x MAN, 12V-1400 hp
Gearbox	2 x ZF3050
Propulsion	2 x Rolls Royce 56A3

ELECTRICAL EQUIPMENT

Network	24V DC, 208V 60 Hz AC
Generator set	1 x 17.5 kW

DECK LAY-OUT

Anchor equipment	1 X Fortress FX-125 w/ chain & line
Bow fendering	RG Seasight Rubber
Secondary access	Osbit MaXccess / TDD (Tube Docking Device) VGRIP / TAS (optional)
Deck crane	Palfinger PK6500M (optional)
Mob recovery system	Ladder w/ Ship Mounted Davit

LIFE SAVING EQUIPMENT

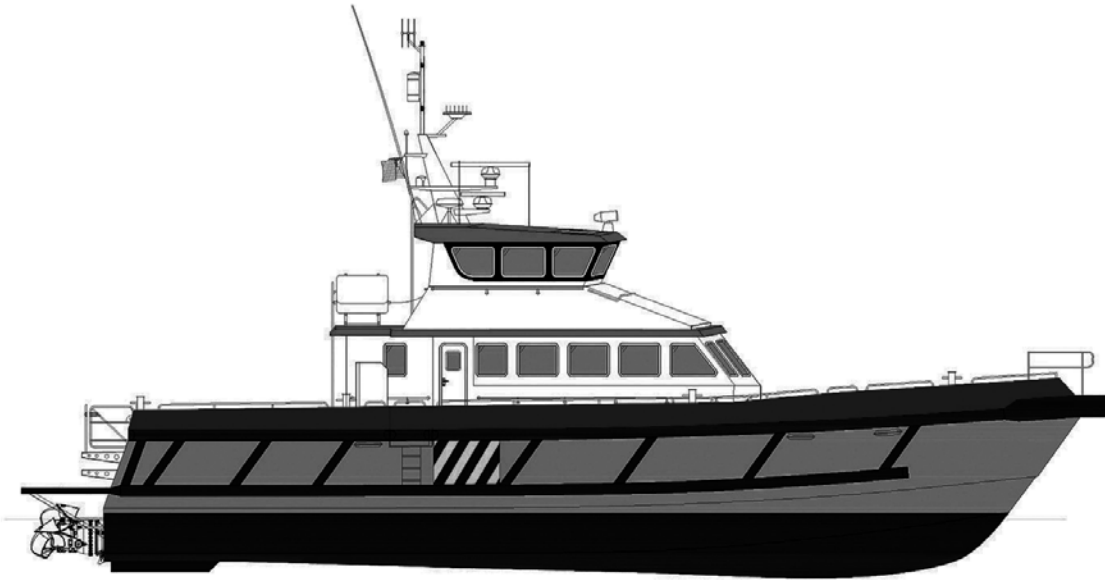
USCG Compliant

ACCOMMODATIONS

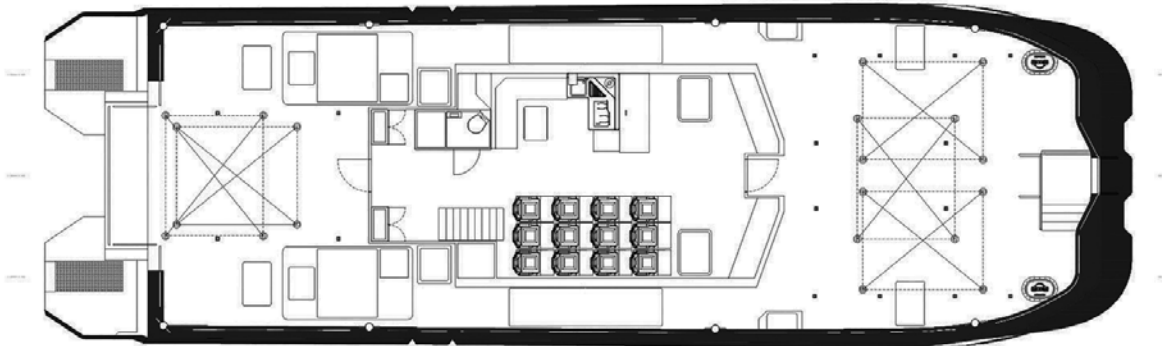
Accommodation	12 x Saloon Seats, 2 x Crew Cabins (optional) Galley/Mess Area, 1 x Heads, 4 x Bridge Seats
Noise levels	<62 dba

24M WIND FARM SERVICE VESSEL

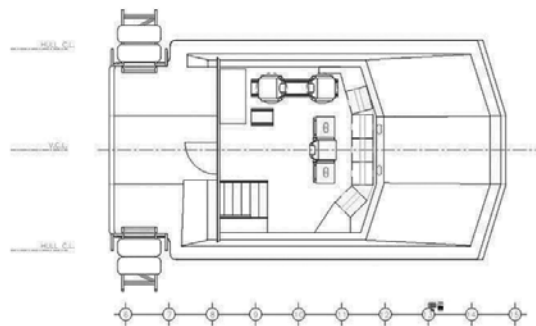
Crew Transfer Vessel



ELEVATION



PLAN



Under License with South Boats IOW



461 WATER STREET, PO BOX 368
WARREN, RHODE ISLAND, 02885

T 401.245.8300 F 401.245.8303 E info@blountboats.com W blountboats.com